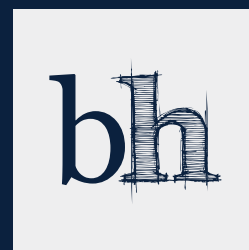
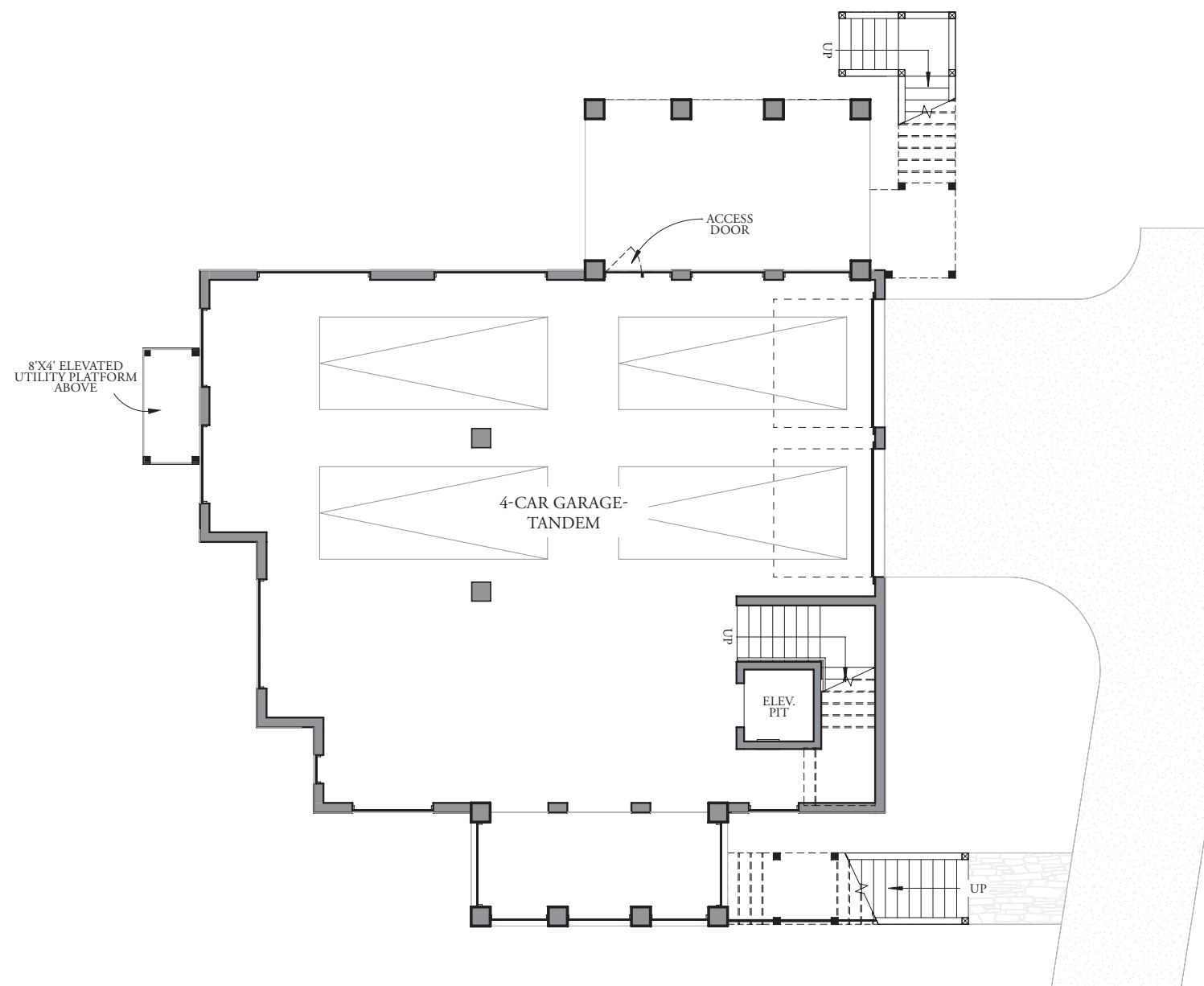


– TERRACE LEVEL –



design · build · live

843.574.8943

WWW.BRIGHTWATERHOMES.COM



Sales by Beach Residential. Subject to changes, errors and omissions. 1739-2719-0425

THE
PRESERVE
AT PENNYS CREEK



HOMESITE #18

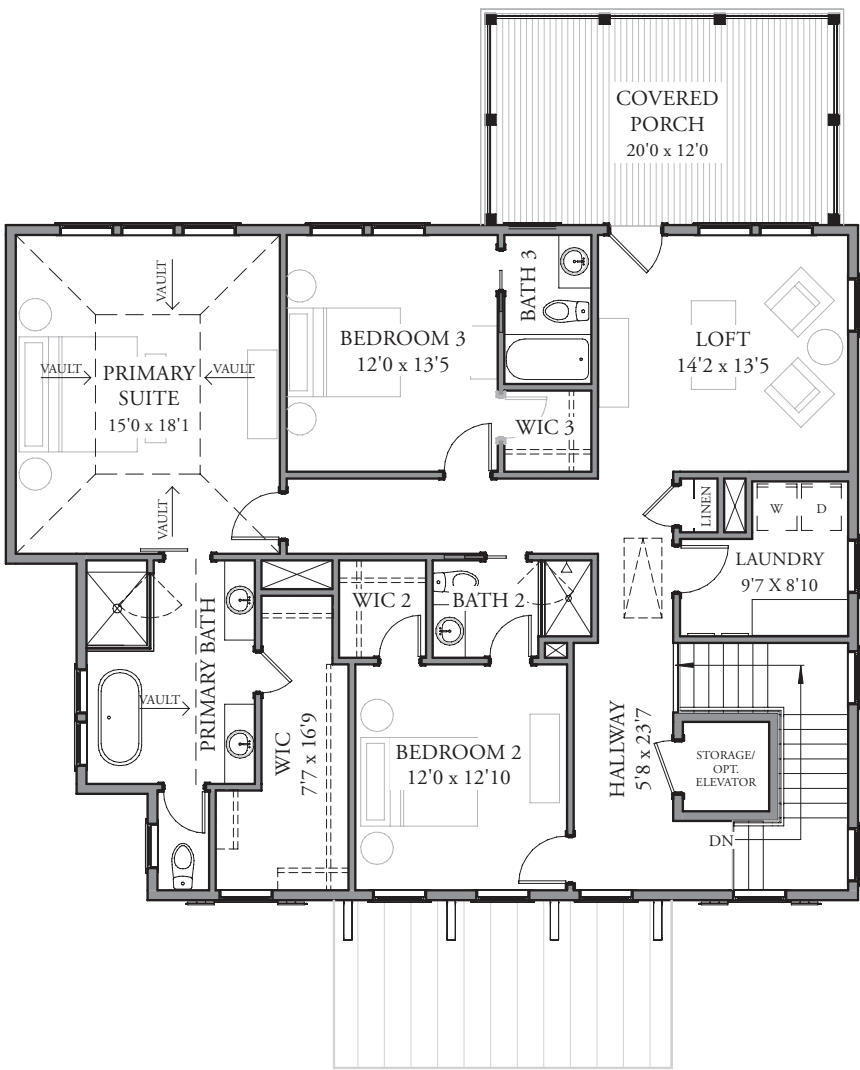
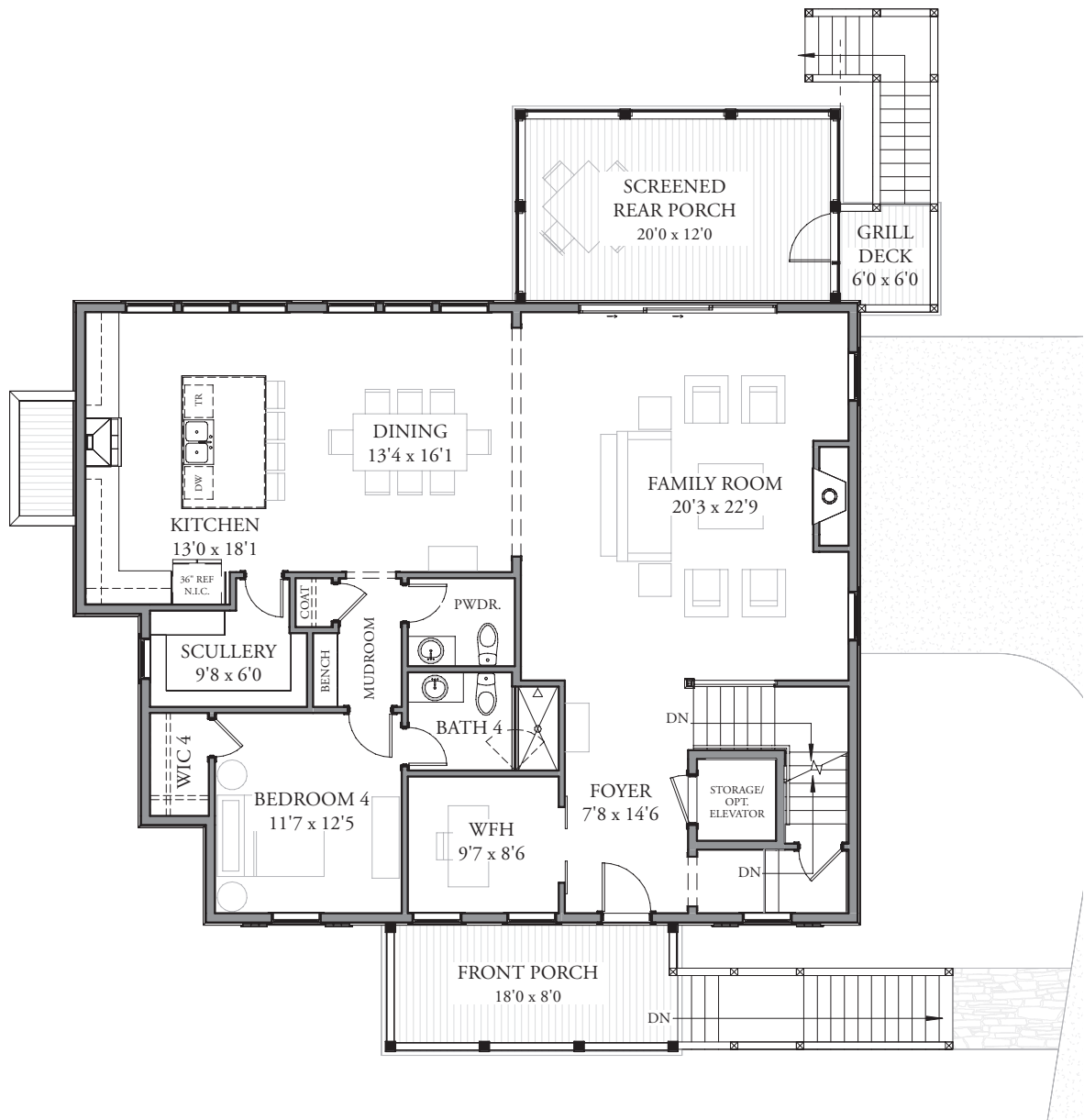
Kingfisher

brightwaterhomes
design · build · live



– FIRST FLOOR –

– SECOND FLOOR –



EXTERIOR COLORS
INSPIRED BY THE
LOW COUNTRY:

KINGFISHER

MAIN

ANEW GRAY SW7030

ACCENT 1

PURE WHITE SW7005

STUCCO BASE & SLATS

KEystone GRAY SW7029

FRONT DOOR

AQUAVERDE SW9051

MAIN ROOF

ASPHALT SHINGLES WEATHERED WOOD

HOMESITE 18

4 BD, 4.5 BA
3348 Sq. Ft.
1st Floor: 1721 Sq. Ft.
2nd Floor: 1627 Sq. Ft.

FEATURES

- Vaulted Primary Suite
- Upstairs Entertaining Loft
- Double Porches on the Rear of the Home
- 4 Car Tandem Garage
- Wooded Homesite

AT HOME ALONG THE BANKS
OF PENNYS CREEK

- Custom Low Country Inspired Designs in Sought-After Johns Island
- Sea Island Setting Featuring Neighborhood Trails, Outdoor Firepit, and Community Docks
- Easy Access to Local Shopping, Dining, and Recreational Activities
- Short Drive to Downtown Charleston, Folly Beach, and Charleston International Airport

© 2025 Brightwater Homes, LLC. All rights reserved. No portion of this document may be used in whole or in part without the prior written permission of Brightwater Homes, LLC. All information is believed to be accurate but not warranted. Features, materials, dimensions and designs are subject to errors and omissions and may change at any time without prior notice.