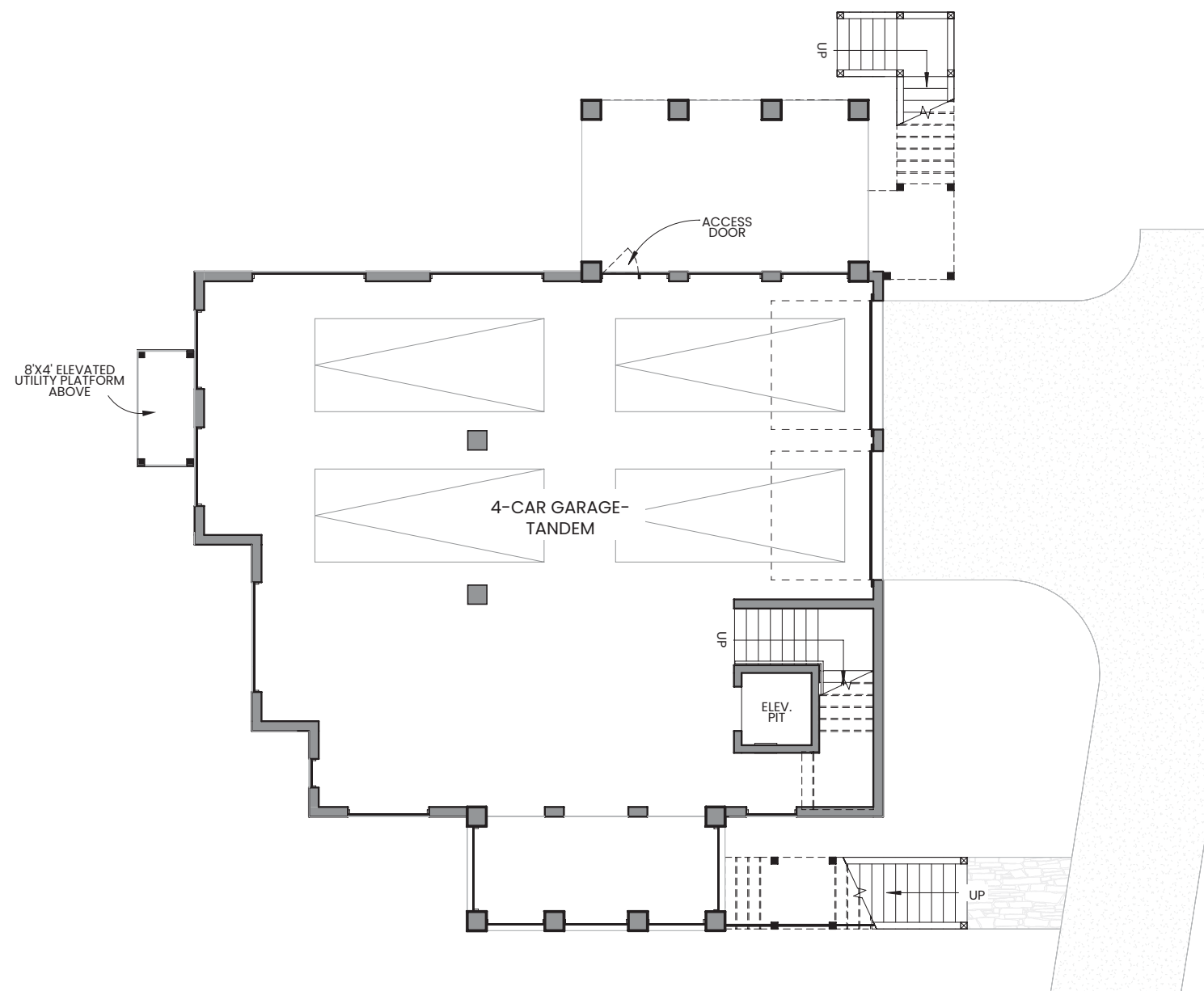


- terrace level -



843.574.8943

[brightwaterhomes.com](http://brightwaterhomes.com)

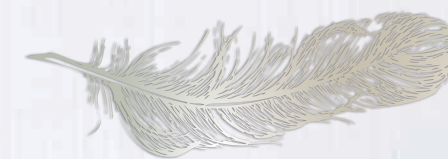


Sales by Beach Residential. Subject to changes, errors and omissions. 1739-2811-0725

THE  
**PRESERVE**  
AT PENNYS CREEK



homesite #18  
eastern screech owl

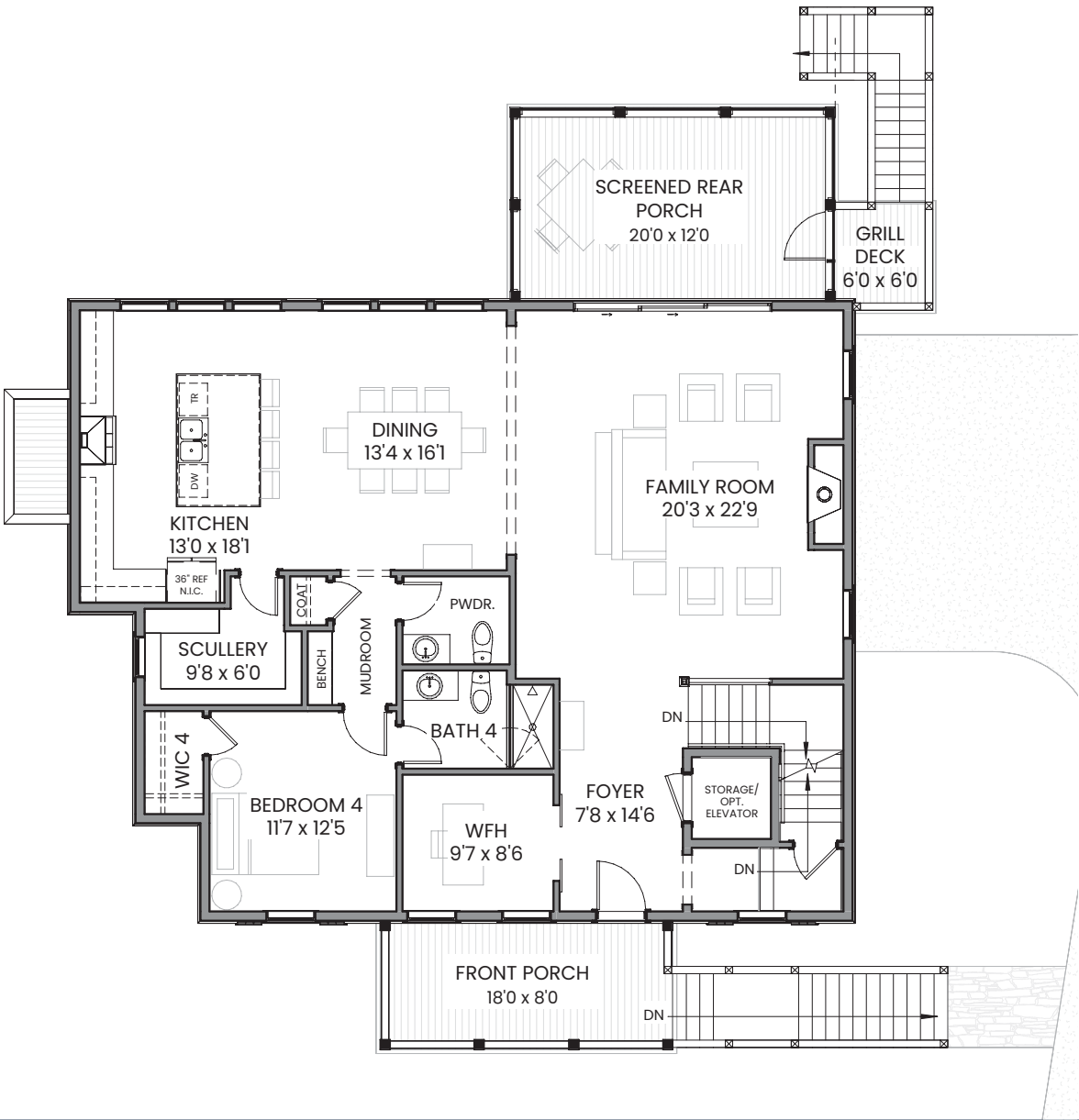


**brightwater**  
design • build • live

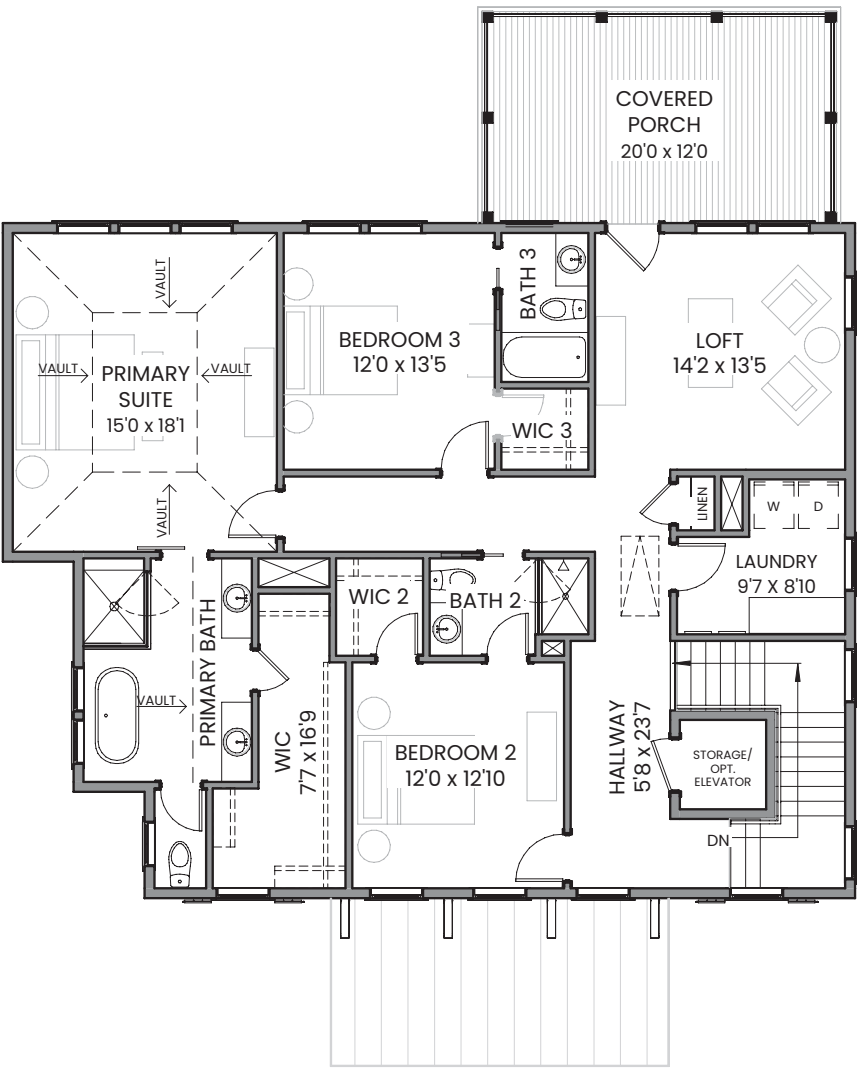


A ZERO ENERGY READY HOME

- first floor -



- second floor -



exterior colors  
inspired by the  
low country:  
eastern screech  
owl

main

OAT MILK SW9501

accent 1

OAT MILK SW9501

stucco base & slats

SIMPLE STONE SW9521

front door

HAZEL GAZE SW9652

main roof

ASPHALT SHINGLES  
WEATHERED WOOD

homesite 18

4 BD, 4.5 BA  
3348 Sq. Ft.

1st Floor: 1721 Sq. Ft.

2nd Floor: 1627 Sq. Ft.

features

- Vaulted Primary Suite
- Upstairs Entertaining Loft
- Double Porches on the Rear of the Home
- 4 Car Tandem Garage
- Wooded Homesite
- Zero Energy Ready Home

at home along the banks  
of pennys creek

- Custom Low Country Inspired Designs in Sought-After Johns Island
- Sea Island Setting Featuring Neighborhood Trails, Outdoor Firepit, and Community Docks
- Easy Access to Local Shopping, Dining, and Recreational Activities
- Short Drive to Downtown Charleston, Folly Beach, and Charleston International Airport

© 2025 Brightwater Homes, LLC. All rights reserved. No portion of this document may be used in whole or in part without the prior written permission of Brightwater Homes, LLC. All information is believed to be accurate but not warranted. Features, materials, dimensions and designs are subject to errors and omissions and may change at any time without prior notice.