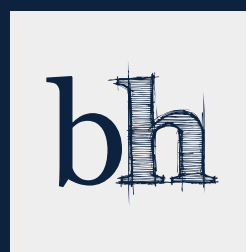
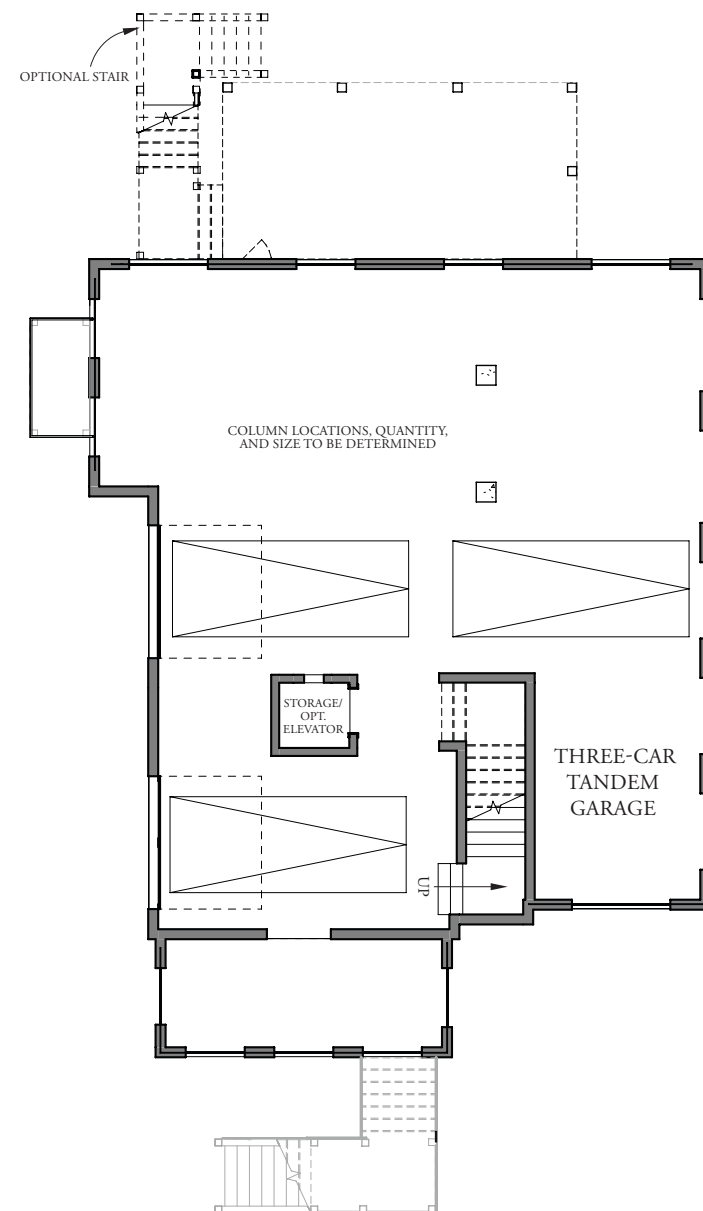


– TERRACE LEVEL –



design · build · live

843.574.8943

WWW.BRIGHTWATERHOMES.COM



Sales by Beach Residential. Subject to changes, errors and omissions. 1739-2626-0225

THE PRESERVE AT PENNYS CREEK



Rendering is representative and subject to change.

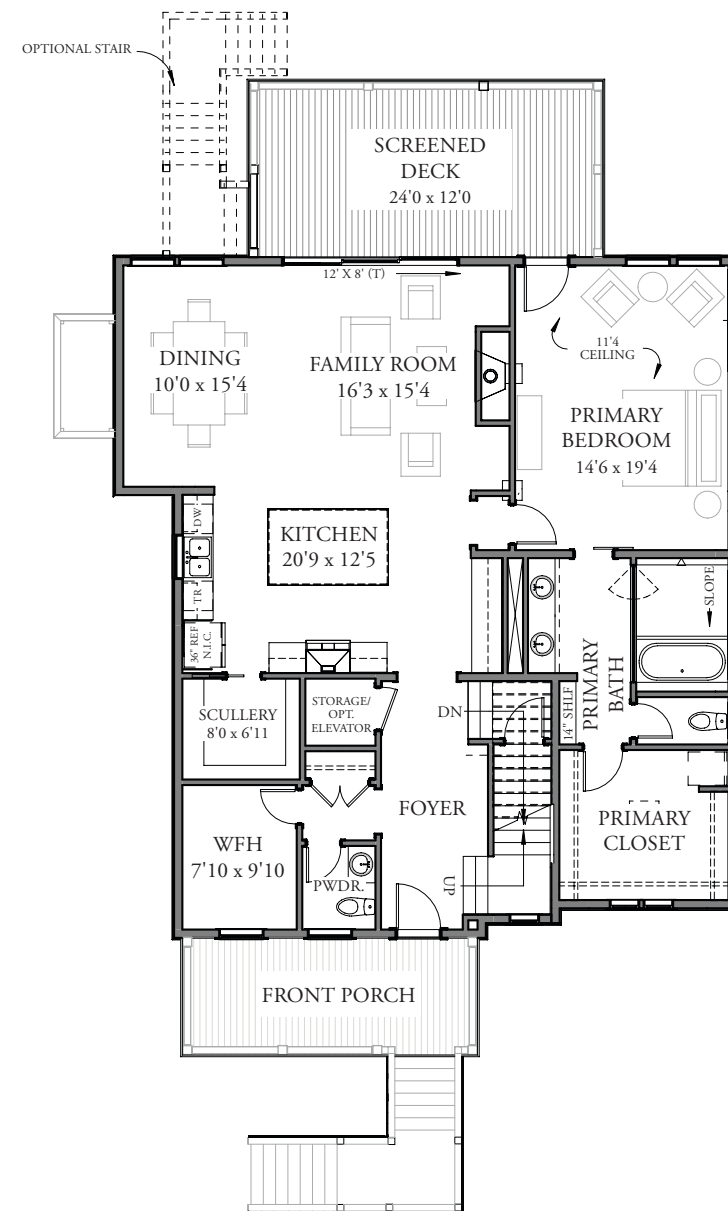
HOMESITE #17

Blue-Gray Gnatcatcher

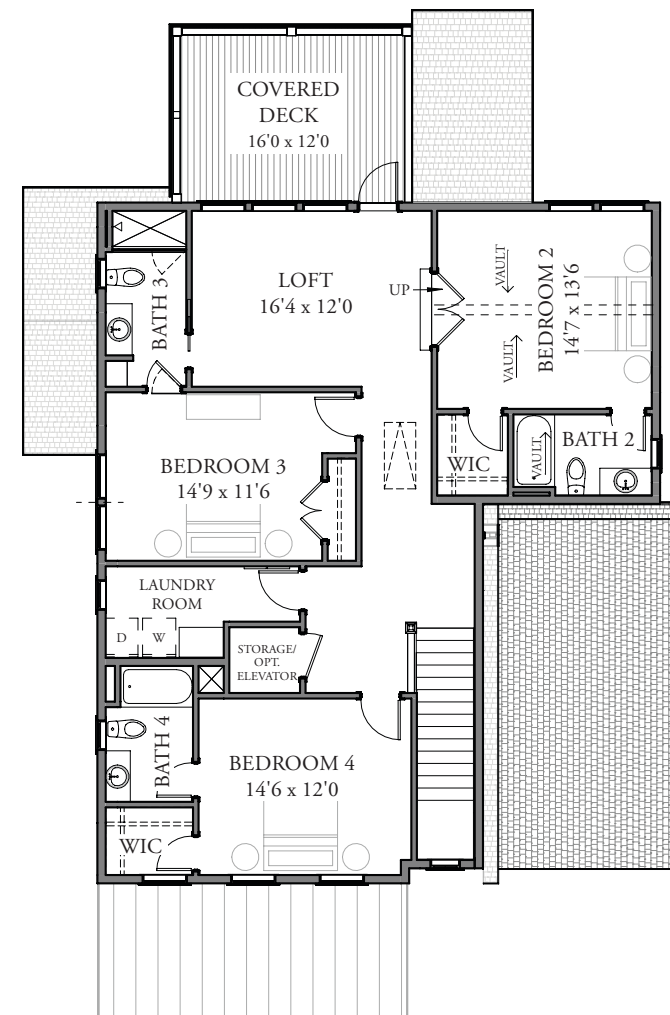
brightwaterhomes
design · build · live



– FIRST FLOOR –



– SECOND FLOOR –



EXTERIOR COLORS
INSPIRED BY THE
LOW COUNTRY:

BLUE-GRAY
GNATCATCHER

MAIN

LULLABY SW9136

ACCENT 1

PURE WHITE SW7005

ACCENT 2

STARDEW SW9138

FRONT DOOR

SEAWORTHY SW7620

MAIN ROOF

ASPHALT SHINGLES WEATHERED WOOD

HOMESITE 17

4 BD, 4.5 BA
3143 Sq. Ft.
1st Floor: 1786 Sq. Ft.
2nd Floor: 1357 Sq. Ft.

FEATURES

- Floorplan Perfect for Indoor/Outdoor Living with Large Screened-In Porch and Deck
- Designated Work from Home Space
- Primary Suite with Spa Retreat on Main Level
- Gourmet Kitchen with Scullery
- 3 Car Tandem Garage
- Marsh Views

AT HOME ALONG THE BANKS
OF PENNYS CREEK

- Custom Low Country Inspired Designs in Sought-After Johns Island
- Sea Island Setting Featuring Neighborhood Trails, Outdoor Firepit, and Community Docks
- Easy Access to Local Shopping, Dining, and Recreational Activities
- Short Drive to Downtown Charleston, Folly Beach, and Charleston International Airport

© 2025 Brightwater Homes, LLC. All rights reserved. No portion of this document may be used in whole or in part without the prior written permission of Brightwater Homes, LLC. All information is believed to be accurate but not warranted. Features, materials, dimensions and designs are subject to errors and omissions and may change at any time without prior notice.