

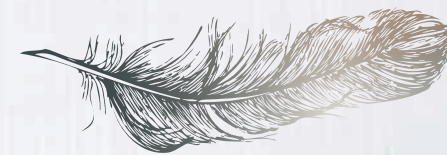


THE PRESERVE AT PENNYS CREEK



Rendering is representative and subject to change.

homesite #65 black bellied plover



brightwater
design • build • live



A ZERO ENERGY READY HOME

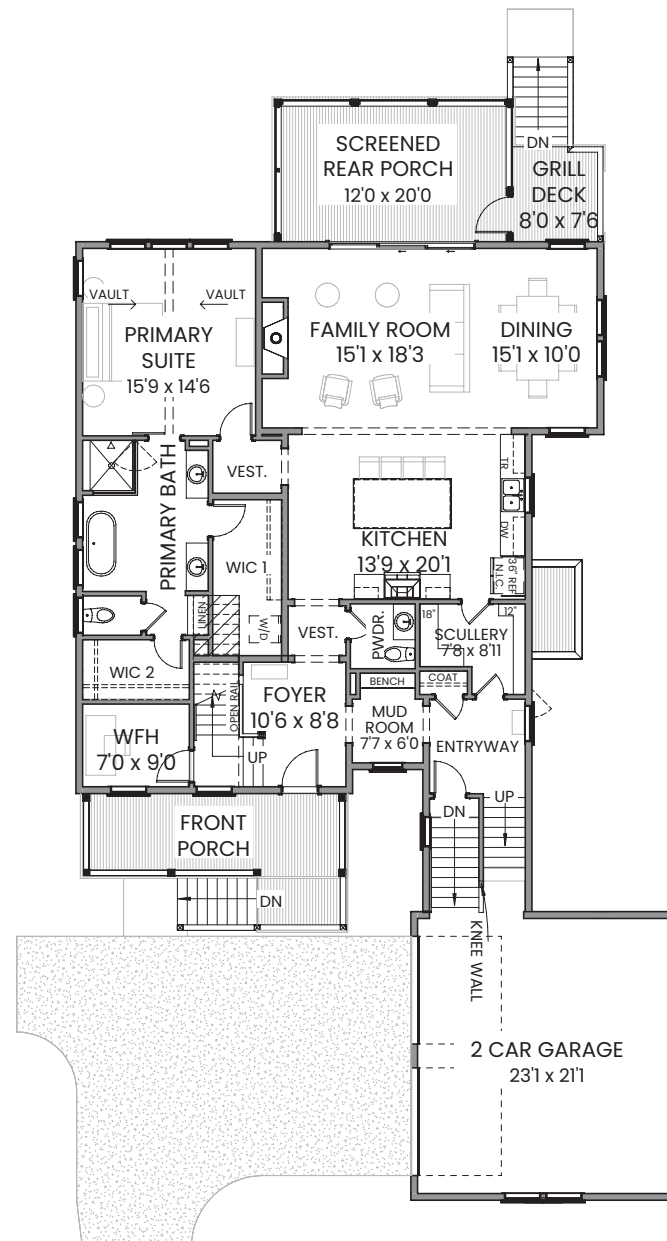


843.574.8943
brightwaterhomes.com

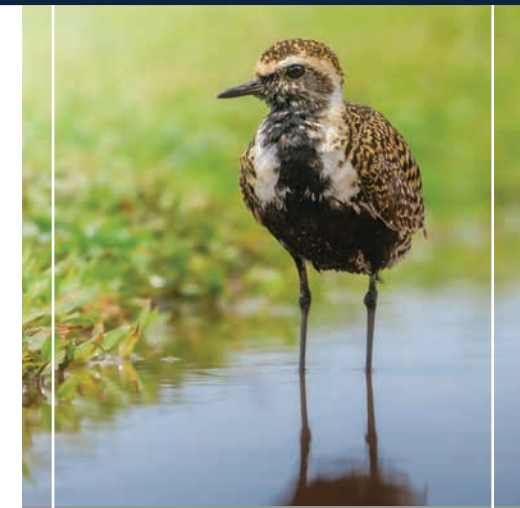
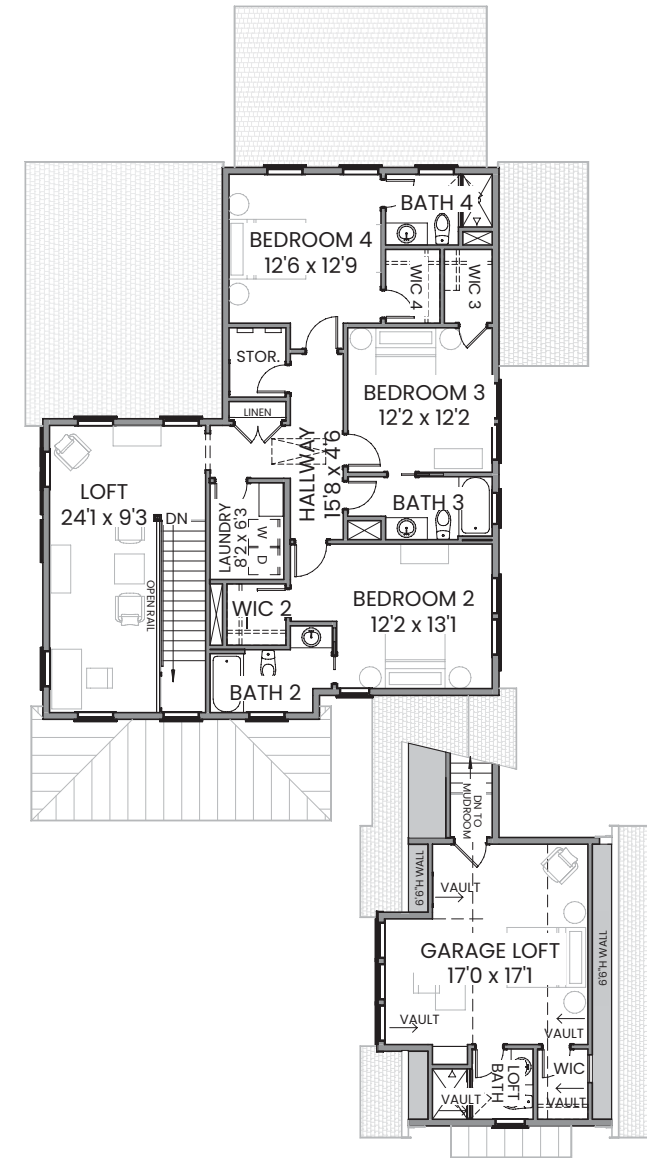


Sales by Beach Residential. Subject to changes, errors and omissions. 1739-2813-0625

- first floor -



- second floor -



exterior colors
inspired by the
low country:

black bellied plover

main

EARL GRAY SW7660

accent 1

HOMBURG GRAY SW7622

accent 2

SNOWBOUND SW7004

front door

MOUNT ETNA SW7625

main roof

ASPHALT SHINGLES:
WEATHERED WOOD

homesite 65

4 BD, 4.5 BA
3582 Sq. Ft.

1st Floor: 1845 Sq. Ft.

2nd Floor: 1337 Sq. Ft.

Garage Loft: 400 Sq. Ft.

features

- Wooded Homesite
- Vaulted Primary Suite on the Main Level
- Private Finished Room Over the Garage
- Entertaining Loft
- Zero Energy Ready

at home along the banks
of pennys creek

- Custom Low Country Inspired Designs in Sought-After Johns Island
- Sea Island Setting Featuring Neighborhood Trails, Outdoor Firepit, and Community Docks
- Easy Access to Local Shopping, Dining, and Recreational Activities
- Short Drive to Downtown Charleston, Folly Beach, and Charleston International Airport

© 2025 Brightwater Homes, LLC. All rights reserved. No portion of this document may be used in whole or in part without the prior written permission of Brightwater Homes, LLC. All information is believed to be accurate but not warranted. Features, materials, dimensions and designs are subject to errors and omissions and may change at any time without prior notice.