



Rendering is representative and subject to change.

HOMESITE #3 | 225 WINTERBERRY WAY

AT HOME AT ASTER

Modern Scandinavian Architecture with Thoughtful and Intentional Curated Interiors

A Zero Energy Ready Home Built to High Quality and Performance Standards

24 Homes Tucked into a Serene, Wooded Setting that Feels Rural but is Ideally Located

in Roswell • Amenities to Include Nature Trails, Unstructured

Play Area, Activity Lawn, Firepit, Seating Areas and Ponds

FEATURES

Primary Suite on First Floor with Porch Access • Gourmet-Appointed Island Kitchen with Scullery • Comfortable Secondary Bedrooms Each with Private Bath, Walk-In Closet

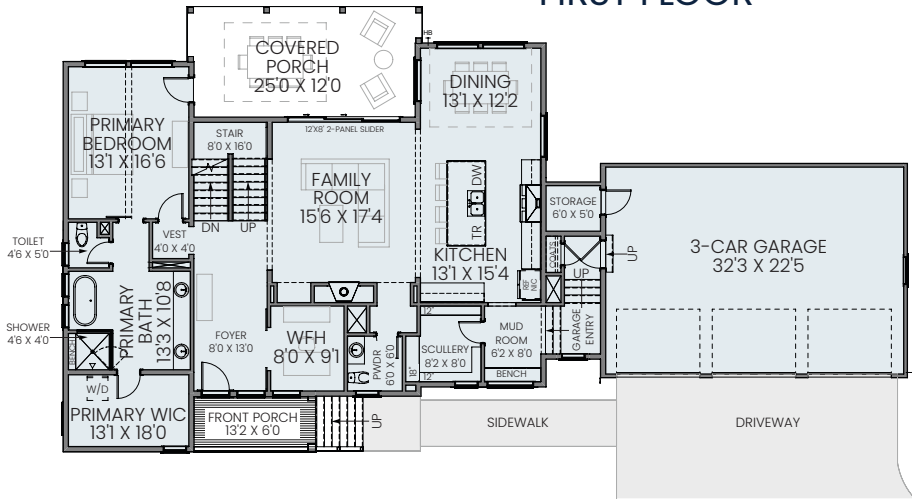
Dedicated Work From Home Space • Three Car Garage



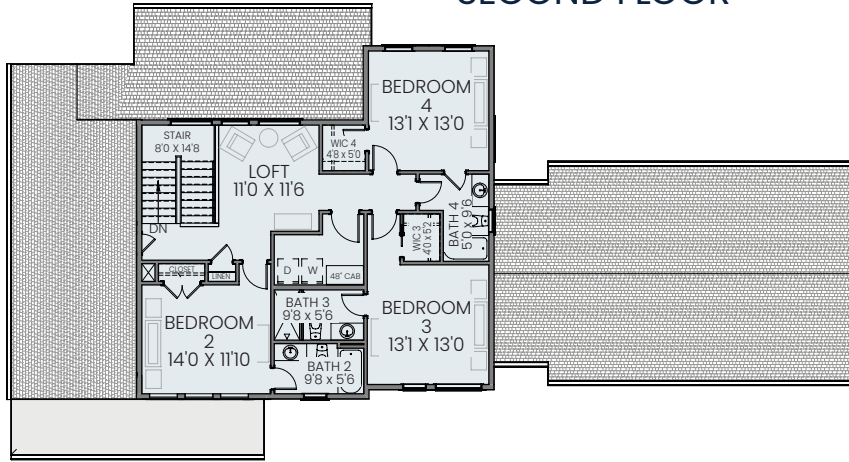
470.386.0929 | BRIGHTWATERHOMES.COM



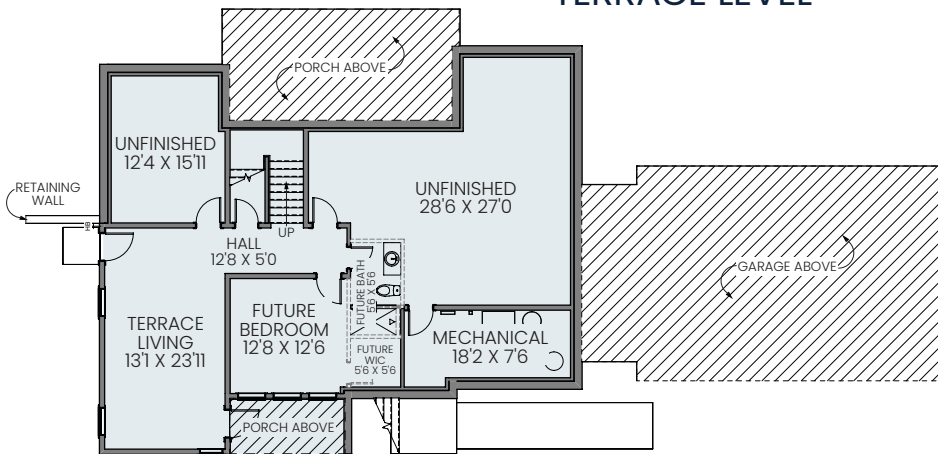
– FIRST FLOOR –



– SECOND FLOOR –



– TERRACE LEVEL –



HOMESITE 3

4 BD, 4.5 BA
3590 Sq. Ft.

1st Floor:
1939 Sq. Ft.

2nd Floor:
1158 Sq. Ft.

Terrace Living:
493 Sq. Ft.



A ZERO ENERGY READY COMMUNITY

470.386.0929 | BRIGHTWATERHOMES.COM



Sales by Lenox Realty Partners. Subject to changes, errors and omissions. 1739-2988-0825