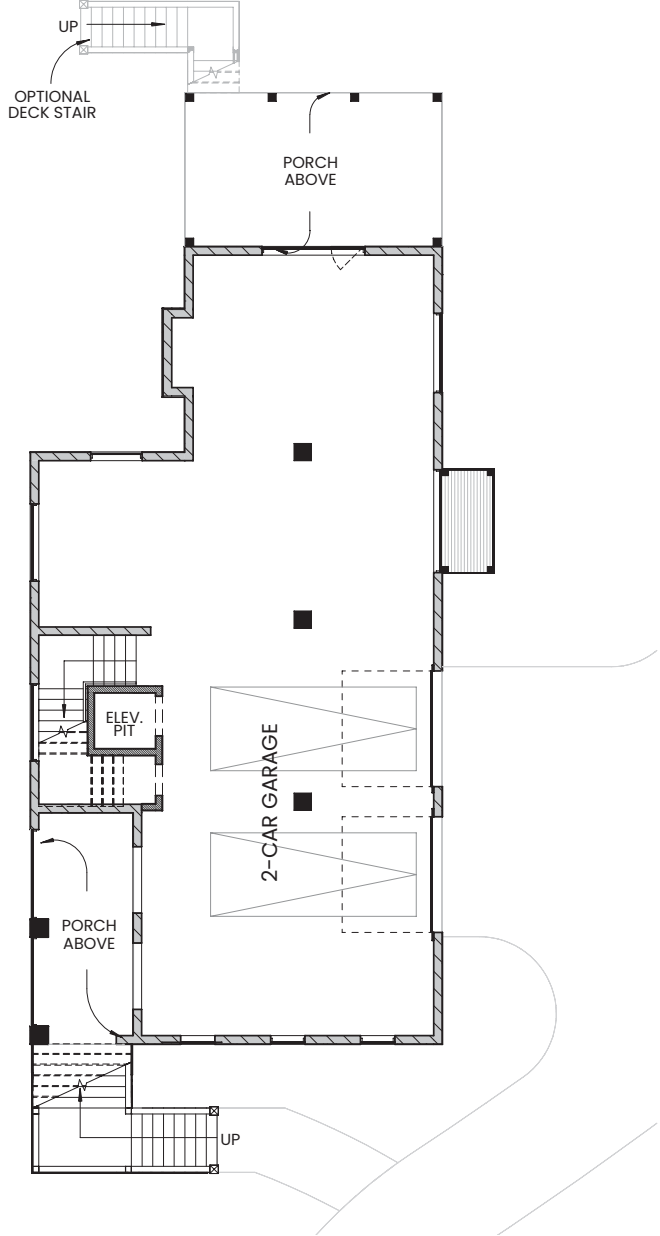


- terrace level -



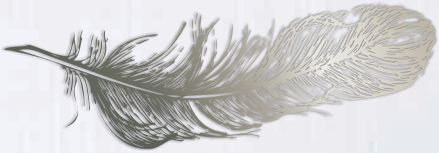
843.574.8943

[brightwaterhomes.com](http://brightwaterhomes.com)

THE  
**PRESERVE**  
AT PENNYS CREEK



homesite #47  
**little blue heron**

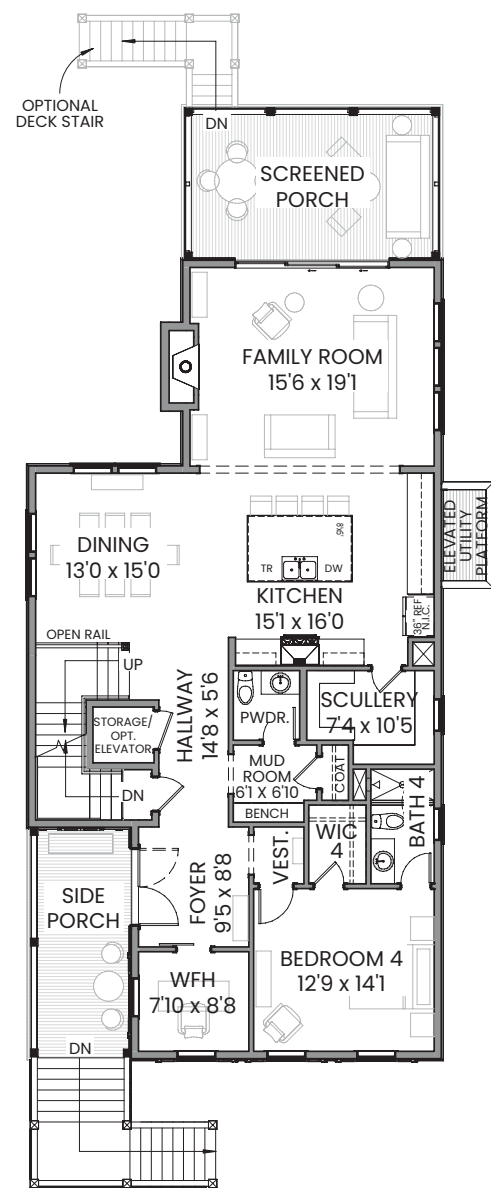


**brightwater**  
design • build • live

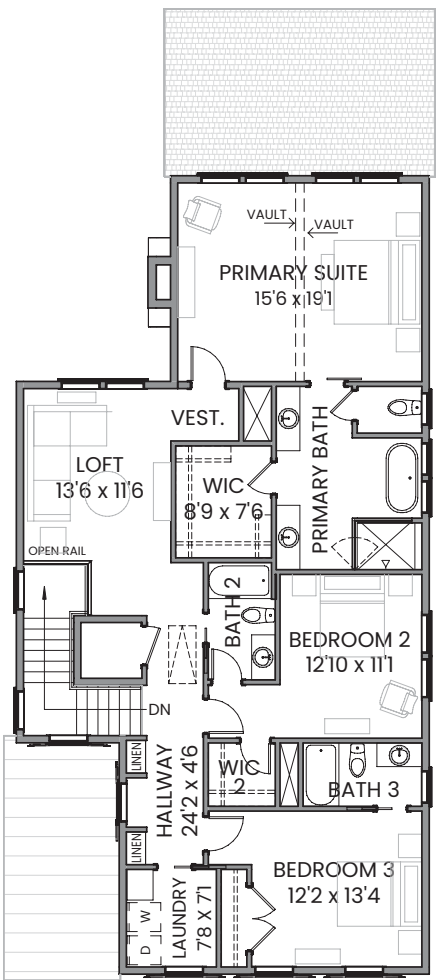


**A ZERO ENERGY READY HOME**

- first floor -



- second floor -



exterior colors  
inspired by the  
low country:  
little blue heron

main

TECHNO GRAY SW6170

accent 1

PURE WHITE SW7005

stucco base & slats

HONED SOAPSTONE SW9126

front door

PEWTER GREEN SW6208

main roof

ASPHALT SHINGLES  
WEATHERED WOOD

homesite 47

4 BD, 4.5 BA  
3225 Sq. Ft.

1st Floor: 1659 Sq. Ft.

2nd Floor: 1566 Sq. Ft.

features

- Charleston Side Porch
- Cul De Sac Home
- Screened Porch
- Scullery
- Vaulted Primary Suite

at home along the banks  
of pennys creek

- Custom Low Country Inspired Designs in Sought-After Johns Island
- Sea Island Setting Featuring Neighborhood Trails, Outdoor Firepit, and Community Docks
- Easy Access to Local Shopping, Dining, and Recreational Activities
- Short Drive to Downtown Charleston, Folly Beach, and Charleston International Airport

© 2025 Brightwater Homes, LLC. All rights reserved. No portion of this document may be used in whole or in part without the prior written permission of Brightwater Homes, LLC. All information is believed to be accurate but not warranted. Features, materials, dimensions and designs are subject to errors and omissions and may change at any time without prior notice.