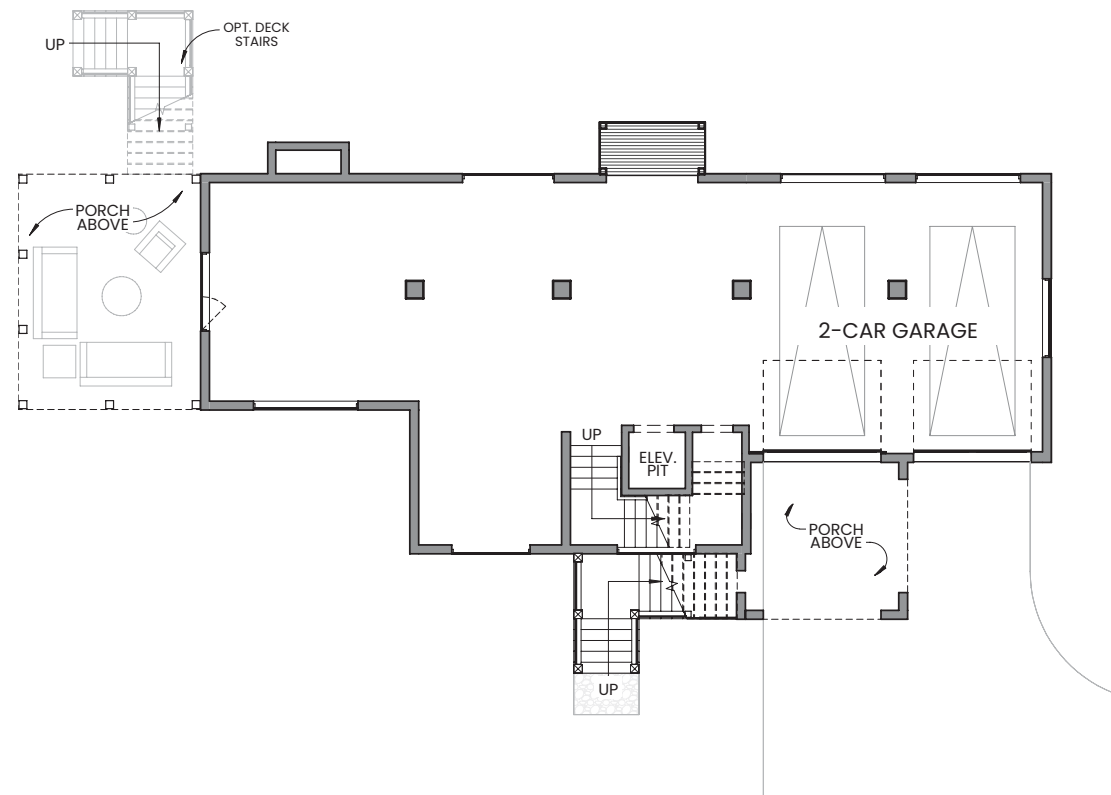


- terrace level -



843.574.8943

[brightwaterhomes.com](http://brightwaterhomes.com)

THE  
**PRESERVE**  
AT PENNYS CREEK



Rendering is representative and subject to change.

homesite #51  
gray catbird



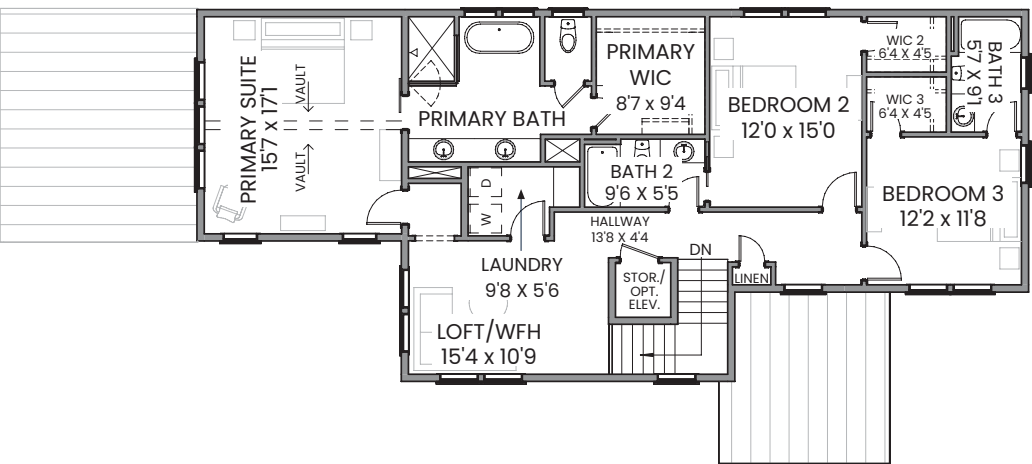
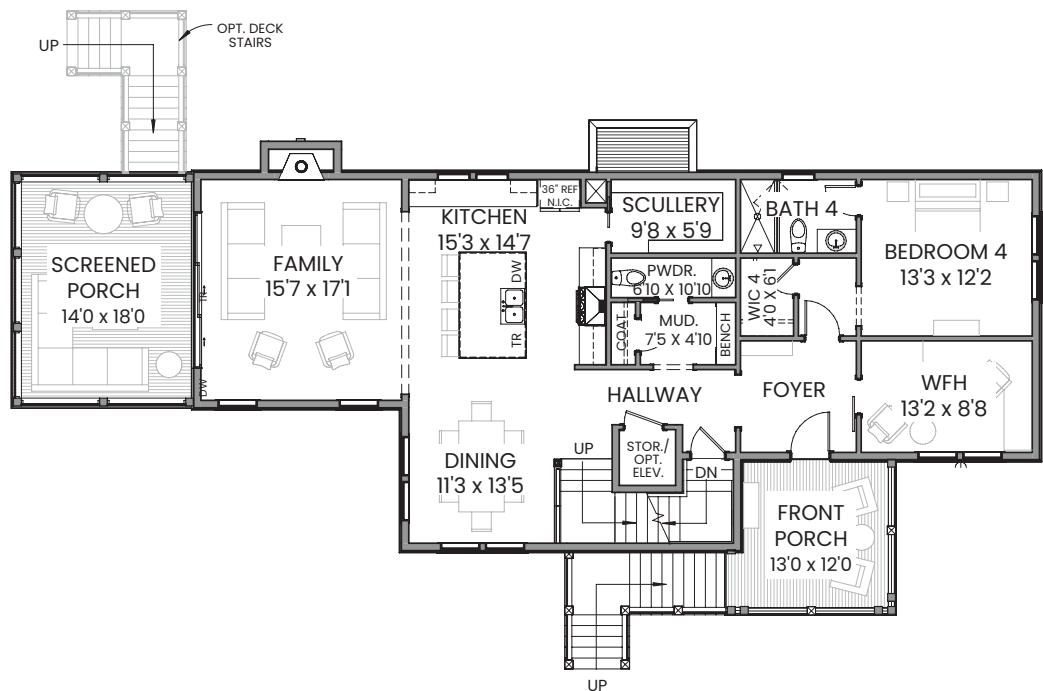
**brightwater**  
design • build • live



A ZERO ENERGY READY HOME

- first floor -

- second floor -



exterior colors  
inspired by the  
low country:  
gray catbird

main

COMFORT GRAY SW6205

accent 1

PURE WHITE SW7005

accent 2

ACACIA HAZE SW9132

front door

THUNDEROUS SW6201

main roof

ASPHALT SHINGLES:  
WEATHERED WOOD

homesite 51

4 BD, 4.5 BA  
3037 Sq. Ft.

1st Floor: 1551 Sq. Ft.

2nd Floor: 1486 Sq. Ft.

features

- Covered Front Porch
- Screened Back Porch
- Optional Elevator
- Gourmet Kitchen with Scullery
- Second Floor WFH or Loft Space

at home along the banks  
of pennys creek

- Custom Low Country Inspired Designs in Sought-After Johns Island
- Sea Island Setting Featuring Neighborhood Trails, Outdoor Firepit, and Community Docks
- Easy Access to Local Shopping, Dining, and Recreational Activities
- Short Drive to Downtown Charleston, Folly Beach, and Charleston International Airport

© 2025 Brightwater Homes, LLC. All rights reserved. No portion of this document may be used in whole or in part without the prior written permission of Brightwater Homes, LLC. All information is believed to be accurate but not warranted. Features, materials, dimensions and designs are subject to errors and omissions and may change at any time without prior notice.