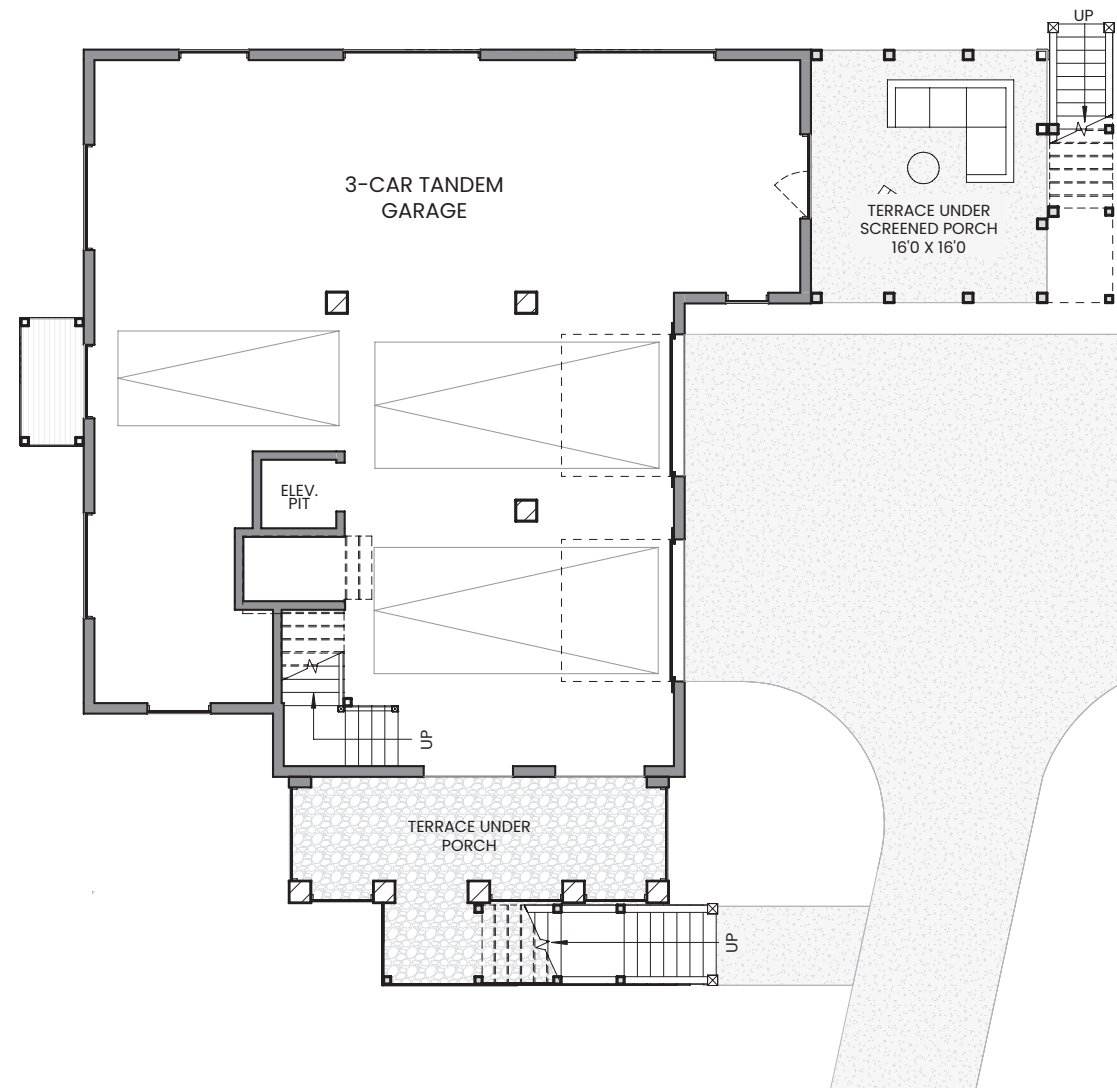


- terrace level -



brightwater

843.574.8943

[brightwaterhomes.com](http://brightwaterhomes.com)

THE  
**PRESERVE**  
AT PENNYS CREEK



Rendering is representative and subject to change.

homesite #50  
**peregrine falcon**



**brightwater**  
design • build • live

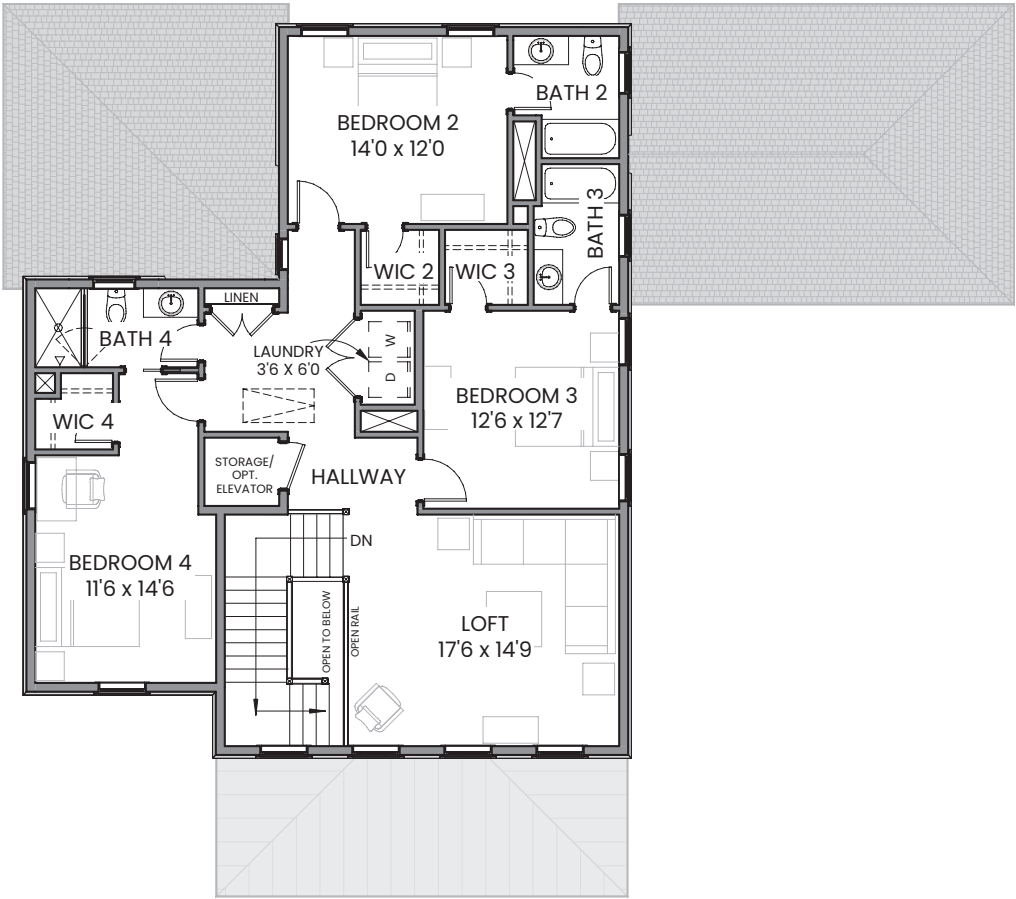
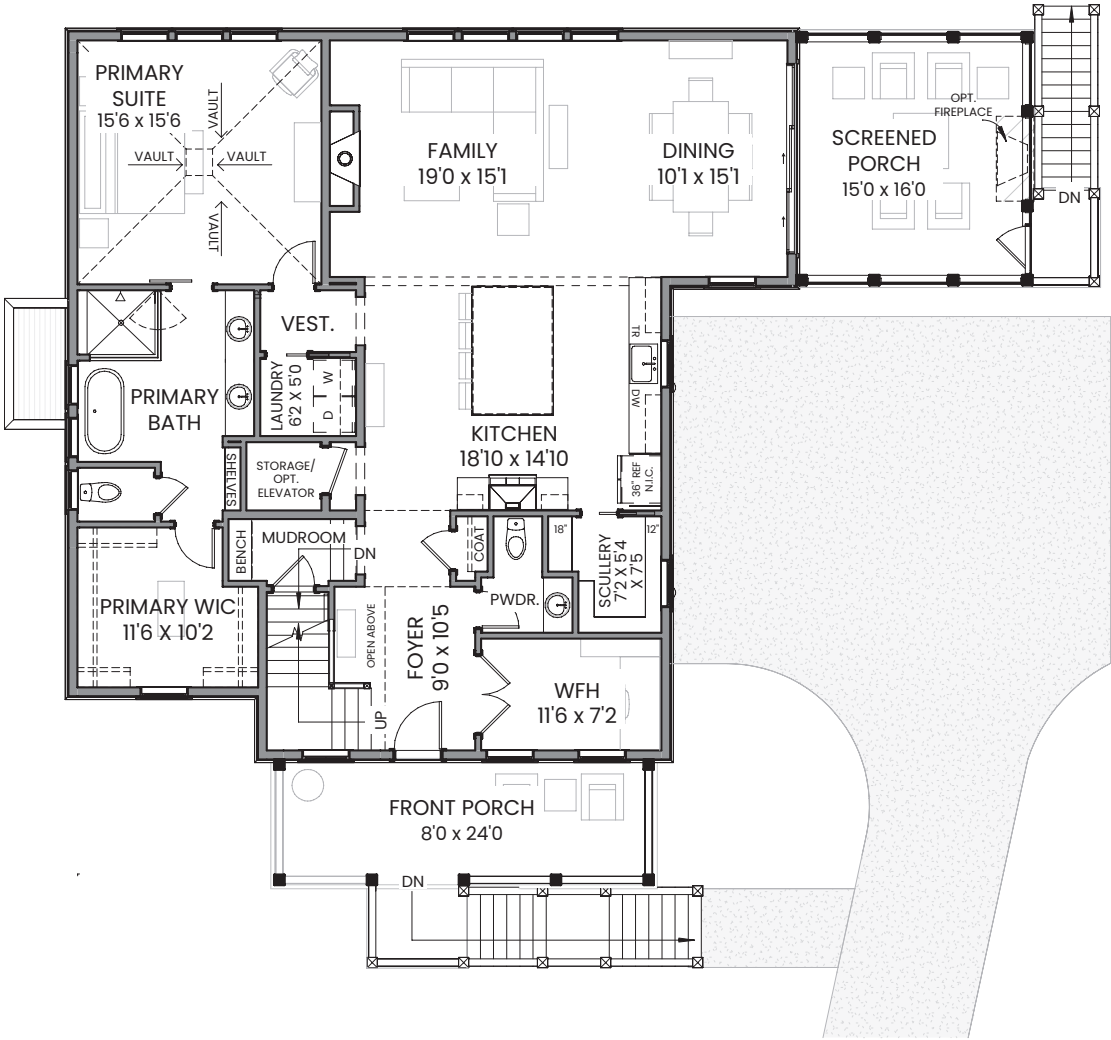


**A ZERO ENERGY READY HOME**



- first floor -

- second floor -



exterior colors  
inspired by the  
low country:  
peregrine falcon

main

AMAZING GRAY SW7044

accent 1

OAT MILK 9501

accent 2

INTELLECTUAL GRAY SW7045

front door

JASPER SW6216

main roof

ASPHALT SHINGLES:  
WEATHERED WOOD

features

- Dual Laundry
- Screened Porch
- Vaulted Primary Suite on Main Level
- Gourmet Kitchen with Scullery
- Optional Elevator

at home along the banks  
of pennys creek

- Custom Low Country Inspired Designs in Sought-After Johns Island
- Sea Island Setting Featuring Neighborhood Trails, Outdoor Firepit, and Community Docks
- Easy Access to Local Shopping, Dining, and Recreational Activities
- Short Drive to Downtown Charleston, Folly Beach, and Charleston International Airport

© 2025 Brightwater Homes, LLC. All rights reserved. No portion of this document may be used in whole or in part without the prior written permission of Brightwater Homes, LLC. All information is believed to be accurate but not warranted. Features, materials, dimensions and designs are subject to errors and omissions and may change at any time without prior notice.

homesite 50

4 BD, 4.5 BA  
3148 Sq. Ft.

1st Floor: 1828 Sq. Ft.

2nd Floor: 1320 Sq. Ft.